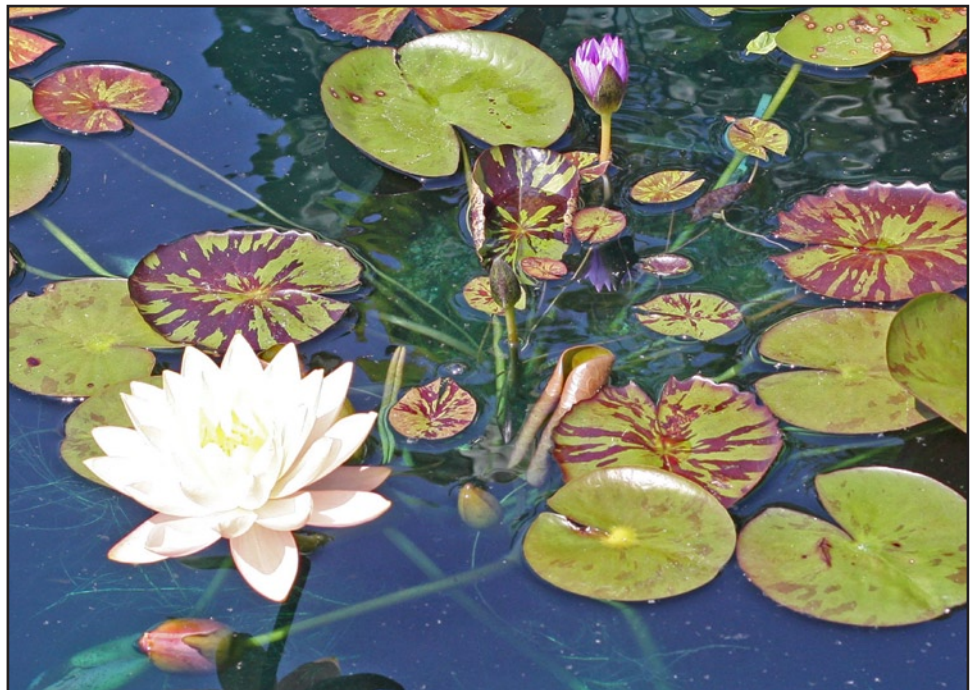


LESSON #5: Applying Artistic Effects

- This Photo is Painted On!
- Creating a Soft and Dreamy Photo
- Making a Woodcut
- Creating an Oil Painting
- Recording an Action in Photoshop

In this lesson, we'll be continuing to learn ways to create artistic looks in our photos. There are hundreds of different looks that can be applied with Photoshop and Photoshop Elements. I've chosen a few to work through together. I hope you like my choices! Hopefully, some of the Filters and Blend Modes are starting to look familiar to you. The way these items are combined can create many interesting looks. Enjoy!

In case you need a photo to practice on, I am providing my Waterlilies Photo. It's available to download in the Forums. However, I hope you'll try these Effects on your own photos and share your finished products with us in the Gallery!



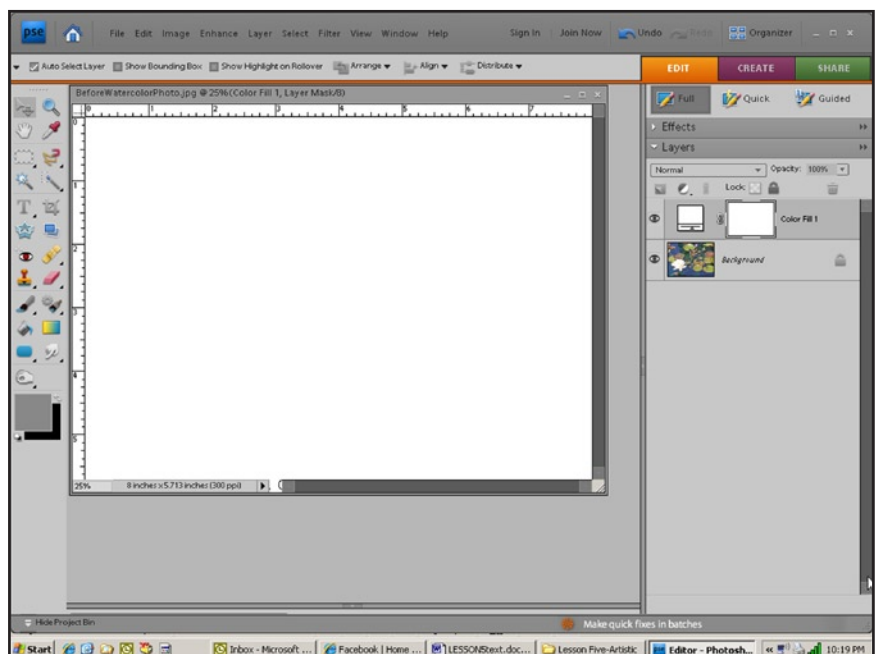
THIS PHOTO IS PAINTED ON!

1. Open a photo, duplicate it and do whatever correction you wish: resizing, color, exposure, sharpening, etc.
2. In the Layers Palette, create a new layer above your photo layer.
3. Next we need to set the Foreground Color (at the bottom of the left toolbar) to white.

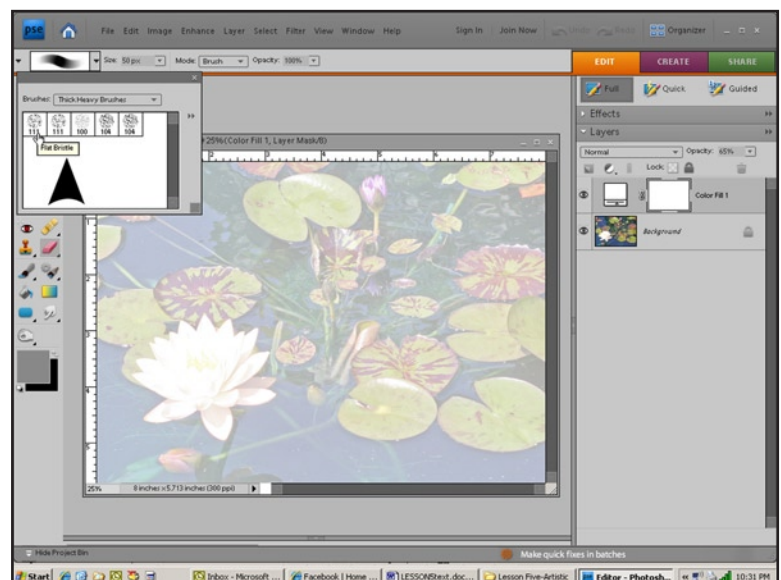
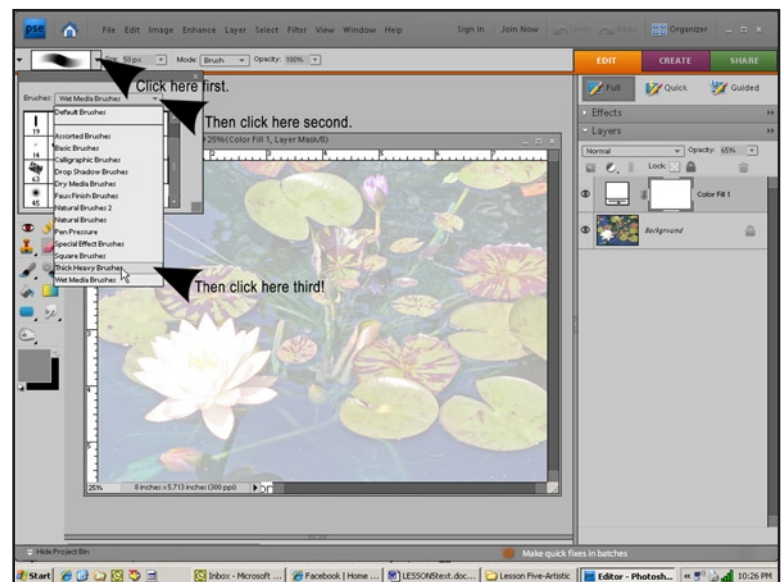


Do you remember how to do this? Press D and then X and white should be your Foreground Color the easy way!

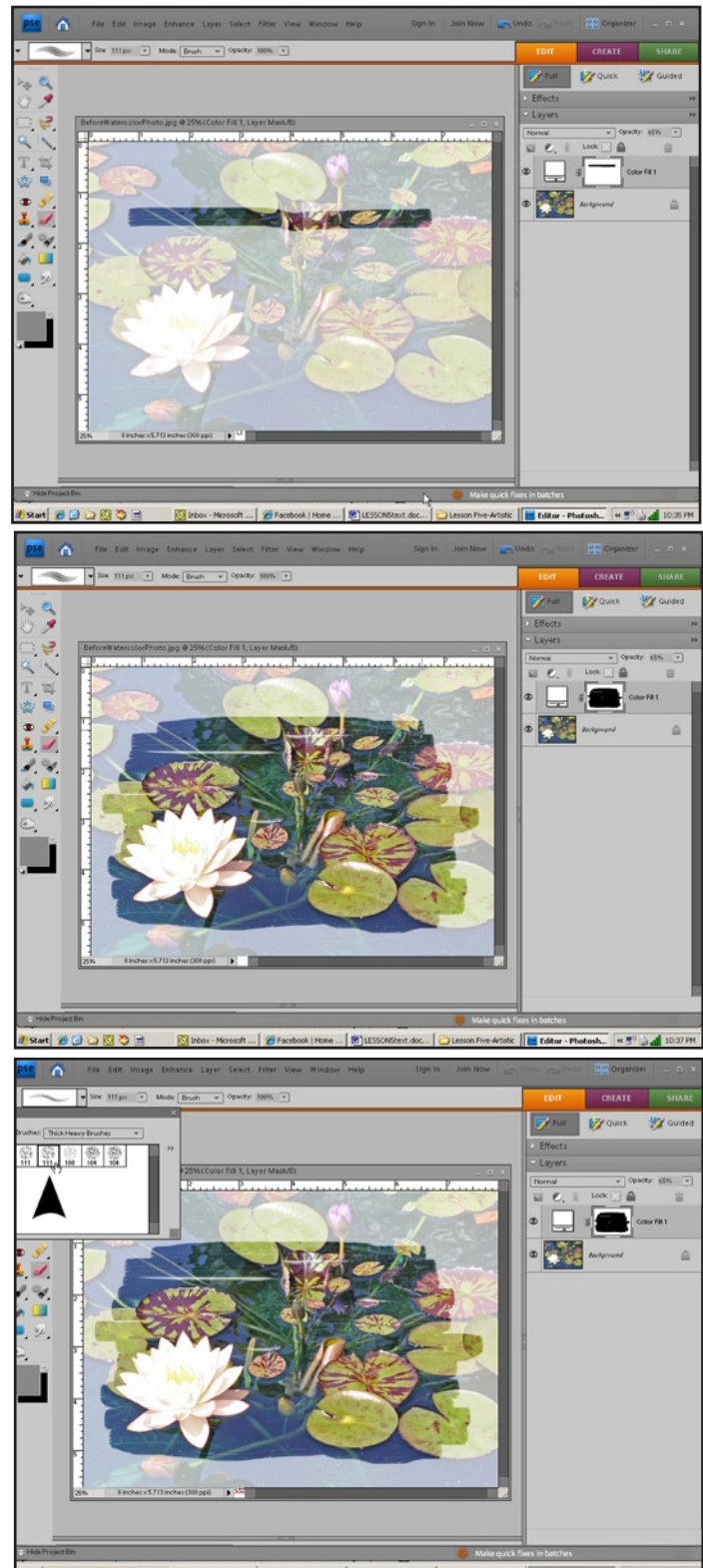
4. In the top menu bar, choose Layer>New Fill Layer>Solid Color. This will bring up the New Layer box. Click OK. When the Solid Color box comes up, it should already be white, which is what we want. Click OK. Now your photo should be covered with white.



5. In a moment, we're going to be erasing this white layer from the photo but we're going to be able to see where we want to erase. To do this, go to the Opacity Slider above the Layers Palette. Slide the Opacity slider to the left to about 65%. We can now see where the photo is underneath.
6. In the left tool bar, select the Eraser Tool. If you right-click on the Eraser, you will see a flyout with the Eraser Options. We will just be using the plain Eraser Tool for this technique.
7. Next we will go to the Eraser Options bar at the top of the screen. Click on the little arrow next to the brushstroke. This will open the dropdown menu. In this box, click on the little arrow to the right of the Brushes box and choose Thick Heavy Brushes. Hover over the brushes in the box and find the 111 px Flat Bristle Brush.
8. Hover over the brushes in the box and find the 111 px Flat Bristle Brush.



9. Making sure the white layer is selected, position the brush near the left side of the photo and paint a stroke across the photo.
10. Repeat paint strokes across the photo until you like the area that has been erased. If there are some areas left white (unerased) it will enhance the painted-on look.
11. Now let's change to a little rougher looking brush. Go back to the top to the Brush Picker and choose the 111 px Rough Flat Bristle Brush.



12. Paint a stroke along the top and bottom of the erased area. This brushstroke will create a more random look and finish off the painted look on the top and bottom.
13. Go back to the Opacity slider above the Layers Palette, and change the white layer back to 100%.

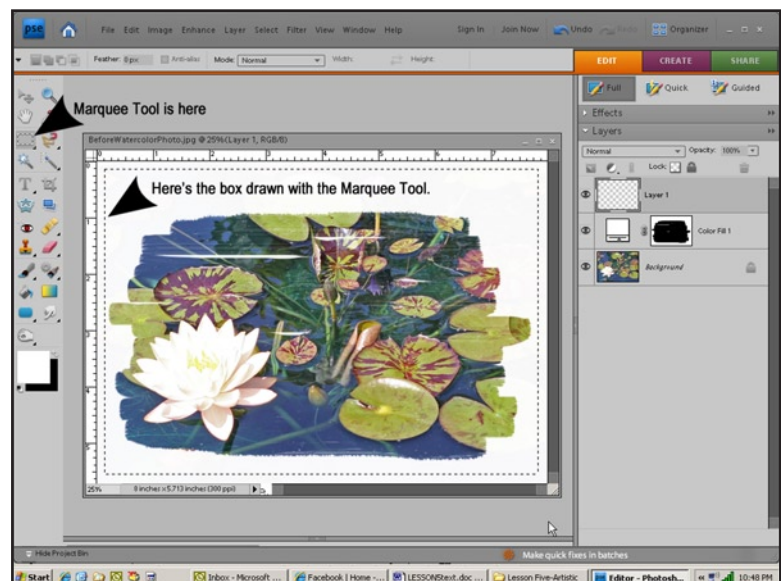
14. You can stop now and flatten and save your photo OR you can add a few more details like this:

15. You may remember this Stroked Edge from Lesson One. Create a new layer above the white layer. Using the Rectangular Marquee Tool, select a line near the edge of the photo.

16. Go to Edit>Stroke and choose the color, size and position of your Stroke. Press CTRL+D (CMD+D) to Deselect.

17. Add text if you wish.

18. Right-click in the Layers Palette, choose Flatten Image. Save the file with a new name. Close this photo file.



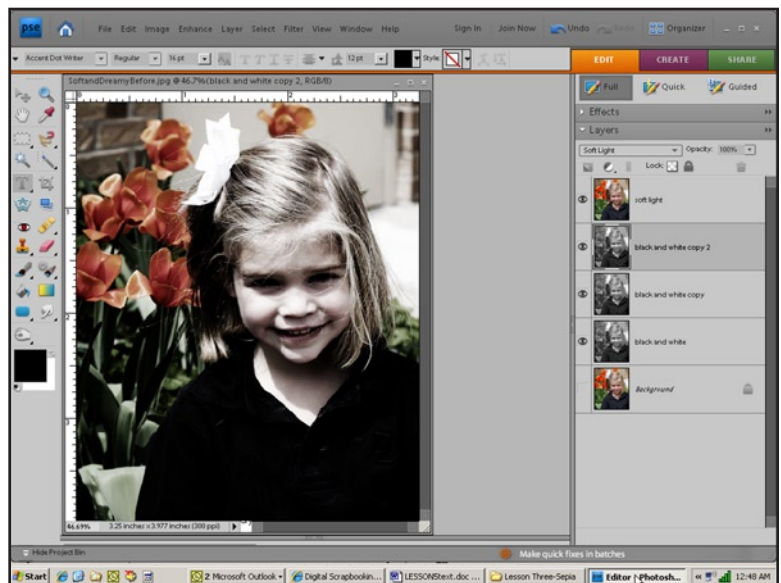
CREATING A SOFT AND DREAMY PHOTO

This technique looks especially nice on a portrait where it creates an almost hand tinted look.



1. Open a photo, duplicate it and do whatever correction you wish: resizing, color, exposure, sharpening, etc.
2. Right-click on the Background Layer and choose Duplicate Layer. (or CTRL+J (CMD+J.) Double click on the layer name and rename it "Soft Light."
3. Click the little eyeball next to the Background Layer to hide it.
4. With the Soft Light layer selected, click on the Blend Mode box above the Layers Palette. Choose Soft Light.

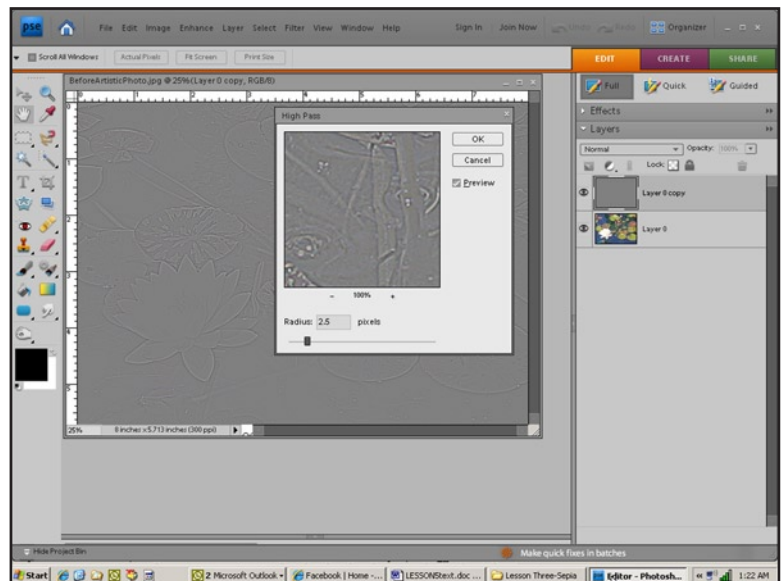
5. Duplicate the Soft Light layer. Rename this layer Black and White. In PSE, go to Enhance>Adjust Color>Remove Color. In Photoshop and older versions of Photoshop Elements, in the top menu bar, go to Image>Adjustment>Desaturate.
6. Duplicate the black and white layer twice. Move the Soft Light layer to the top of the Layers Palette.
7. Now you should have five layers with the Soft Light layer on top, followed by three black and white layers with the Background Layer on the bottom. The Background Layer should still have the eyeball selected and be an invisible layer.
8. Select the top black and white layer. Go to the Blend Mode box above the Layers Palette and choose Screen. Your photo should get a lot lighter.
9. With the same layer still selected, go to Filter>Blur>Gaussian Blur and choose 10 px. Click OK.
10. Go down to the next black and white layer and select it. Go to Filter>Blur>Gaussian Blur and choose 8 px.
11. Right-click in the Layers Palette, choose Flatten Image. Save the file with a new name. Close this photo file. As the Background Layer is hidden, you will be asked if you want to discard it during the flattening. Choose "yes."



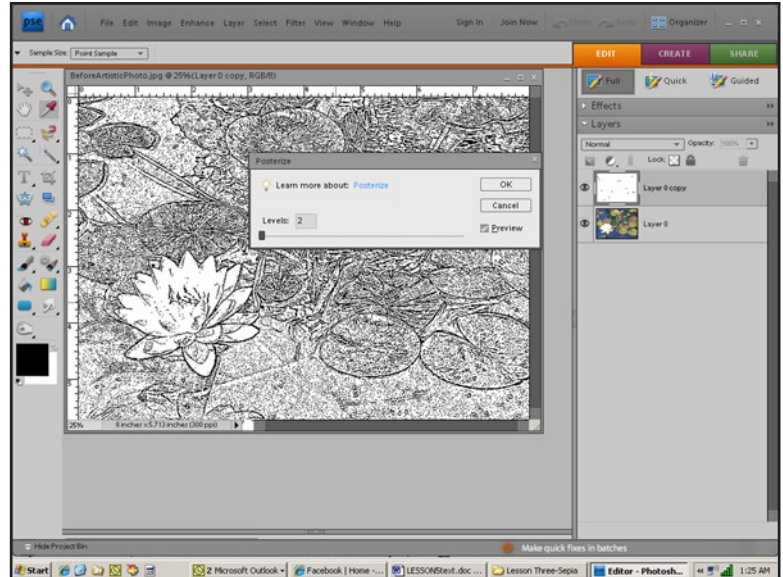
MAKING A WOODCUT

This technique takes a photo, usually a photo without strong lines and contrast and not a lot of detail, and, in a few steps, gives it an aged woodcut look.

1. Open a photo, duplicate it and do whatever correction you wish: resizing, color, exposure, sharpening, etc.
2. Since we are going to work directly on the photo, we need to change it from a Background Layer which is locked. To do this, double-click on the Background Layer name and click OK in the New Layer Box that pops up. This will now be Layer 0.
3. Press CTRL+J (CMD+J) to make a duplicate of the layer.
4. With the Duplicate Layer selected, go to Filter>Other>High Pass. This filter does an extreme job of Sharpening. Choose a Radius of 2.5 and click OK. Your photo should now look very strange, sort of like this:



5. Refer to the directions for the Soft and Dreamy Photo above, and remove the color from the Duplicate Layer. It really won't look much different.
6. With the Duplicate Layer still selected, go to Filter>Adjustments>Posterize. Choose 2 in the Levels box and Click OK.
7. The last steps should make it all come together. Change the Blend Mode of the Duplicate Layer to Multiply and the color will return.
8. Now select Layer 0 and reduce the Opacity to something about 60 or 65%, whatever amount looks good to you in your photo.
9. Right-click in the Layers Palette, choose Flatten Image. Save the file with a new name. Close this photo file.



CREATING AN OIL PAINTING

This technique gives a fabulous Oil Painting look to your photo. However, the look isn't as evident on your screen as it will be when you print the photo, especially in a size a little larger than 4x6. However, when we finish, we'll view the file at a larger size and you can go "ooohhh!"

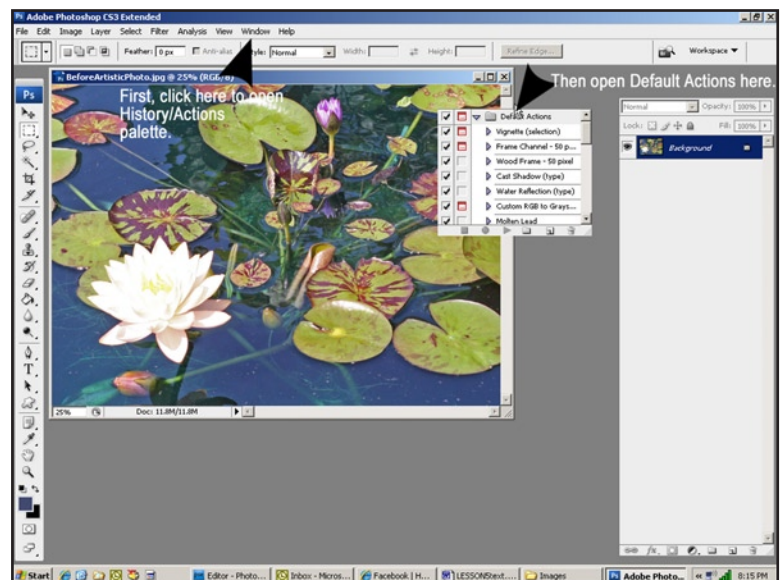
This technique has quite a lot of steps, none of them difficult, to create a great looking Oil Painting from your photo. There is a wonderful tool in Photoshop, one of the few tools that is not available in Photoshop Elements, that creates Actions. An **action** is a series of tasks that you play back on a single file or a batch of files—menu commands, palette options, tool actions, and so on.

Before we begin the Oil Painting technique, I'd like to speak to the Photoshop users only about recording an action. Photoshop Elements users, please excuse us for a minute! Go have some chocolate or a glass of wine, we'll be back to join you in a minute!

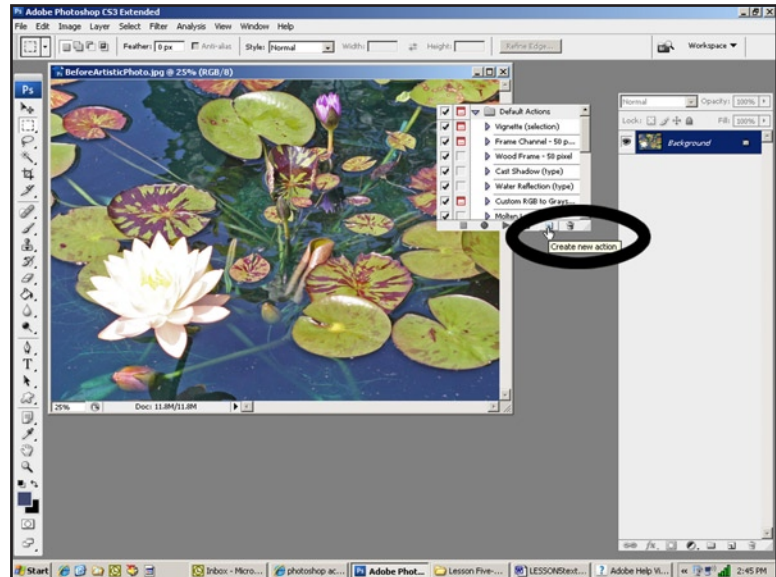
RECORDING AN ACTION IN PHOTOSHOP

Photoshop users! Before we begin the series of steps to create an Oil Painting, we're going to set up our program to record these steps as an action. That means, if you ever want to make an Oil Painting from a photo again, you can just run the action on the photo and the steps will be done automatically. How cool is that? Well, here we go!

1. From the menu bar at the top of your screen, go to Window>History. The History/Actions palette will open.
2. Click on Actions at the top of the box. This will open the list of Actions. If the Default Actions dropdown is closed, click on the little arrow to open the dropdown menu.



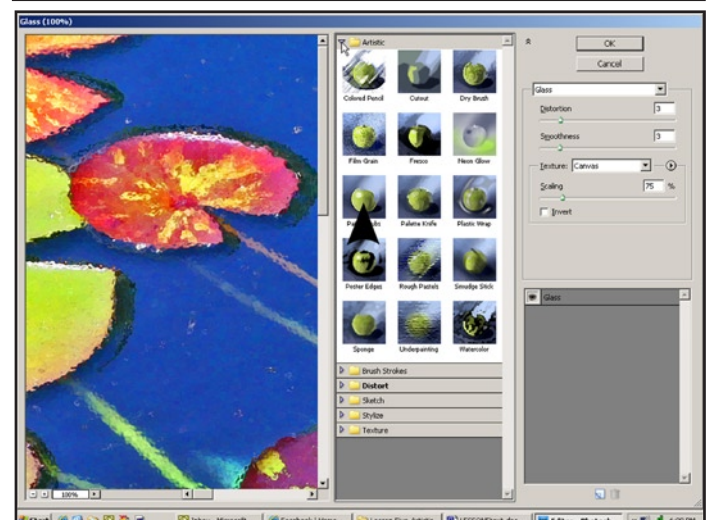
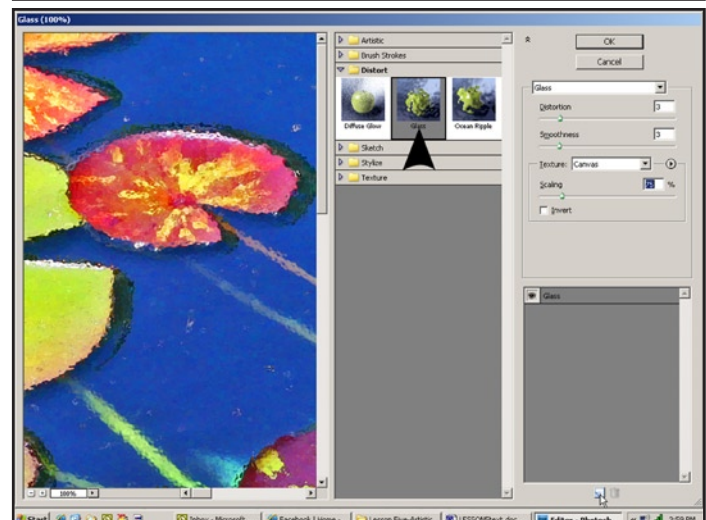
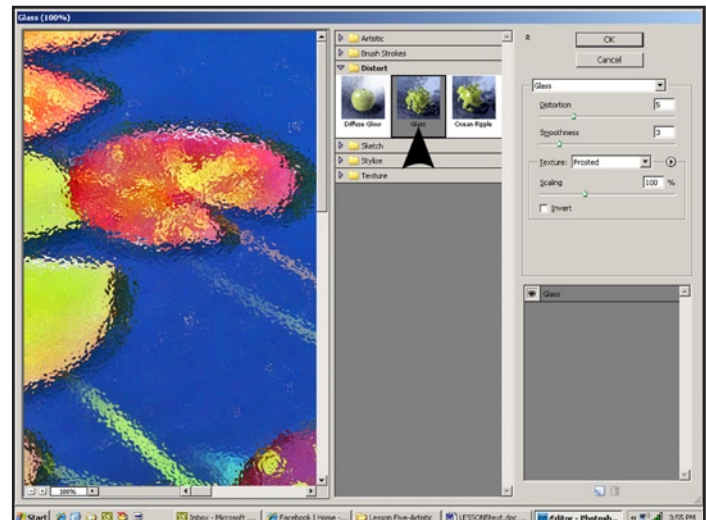
3. At the bottom of the Actions Palette, click on the Create New Action icon.
4. When you click on the Create New Action icon, the New Action box will open. Type in Oil Painting as the name of the new Action you're going to create. Click Record.
5. Now you should be ready to go join your PSE friends and go through the steps to create the Oil Painting look. When the steps are finished, we'll complete the Action. Let's go!



The Oil Painting steps for everyone-PSE and Photoshop Users

1. Open a photo, duplicate it and do whatever correction you wish: resizing, color, exposure, sharpening, etc.
2. Press CTRL+J (CMD+J) to duplicate the Background Layer. Rename this layer "Filters."
3. With the Filter layer selected, in the top menu, go to Enhance>Adjust Color>Adjust Hue/Saturation. (PS users, your command is at Image>Adjustments>Hue/Saturation.) In the Options box, set the Saturation at 50 and click OK. Your photo should be very bright now.

4. In the top menu bar, go to Filter>Distort>Glass. A large Option box that fills the whole screen will come up.
5. Click on the Glass Thumbnail. Choose the following settings in the area at the right of the screen: Distortion 3, Smoothness 3, Texture Canvas, Scaling 75%. **DO NOT CLICK OK!**
6. Click on the New Effect Icon at the bottom right of the screen.
7. In the center section of the screen, click on the little arrow by Distort to close that palette. Click on the little arrow next to Artistic and, when the Artistic Palette opens, choose Paint Daubs.
8. Choose the following settings: Brush Size 4, Sharpness 1, Brush Type Simple. **DO NOT CLICK OK!**



9. Again, click on the New Effect Icon at the bottom right of the screen. Close the Artistic Palette and open the Brush Strokes Palette. Click on the Angled Strokes Thumbnail.

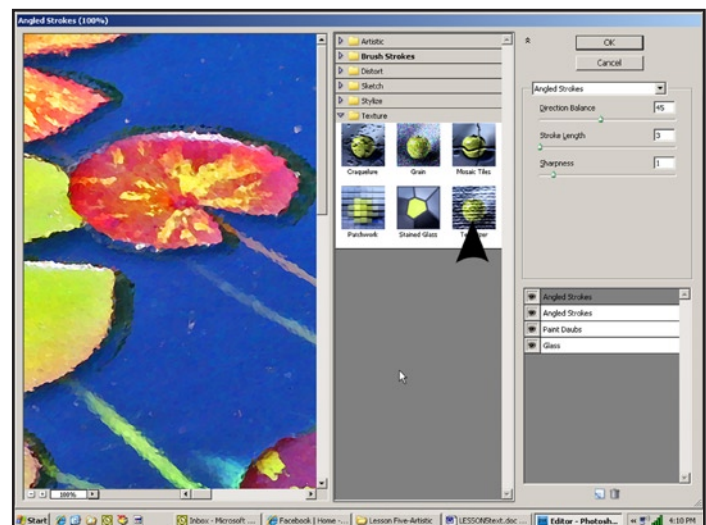
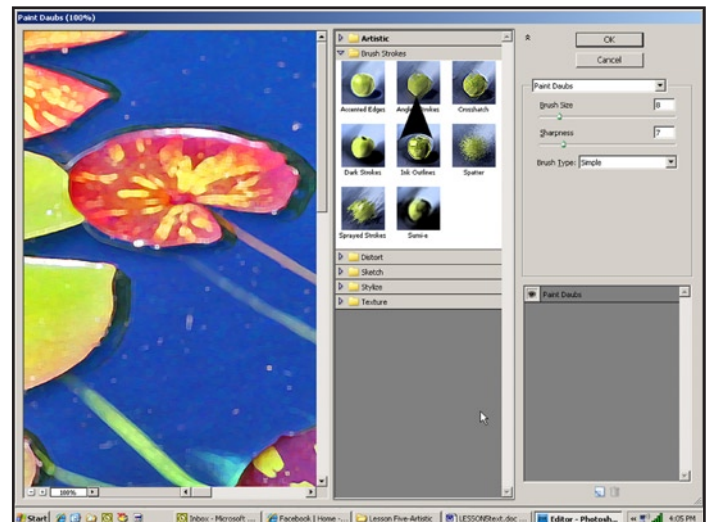
10. Choose the following Brush Stroke settings: Direction Balance 45, Stroke Length 3, Sharpness 1. **DO NOT CLICK OK!**

11. Click on the New Effect Icon one more time. Close the Brush Strokes Palette and open the Texture Palette. Click on the Texturizer thumbnail.

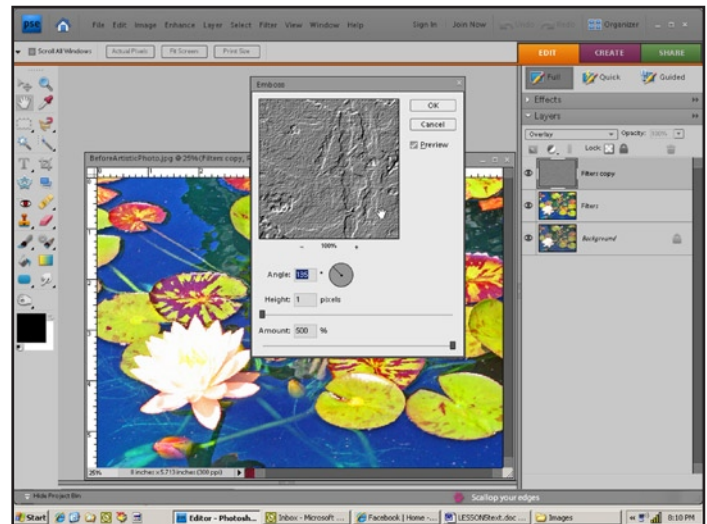
12. Choose the following Texturizer settings: Texture Canvas, Scaling 65%, Relief 2, Light from Top Left. **NOW CLICK OK!**

13. Click CTRL+J (CMD+J) to duplicate the Filters layer. With the Filters copy layer selected, go to Enhance, Adjust color>Remove Color. (In Photoshop, this is Image>Adjustments>Desaturate.)

14. Change the Blend Mode of the Filters Copy layer to Overlay.

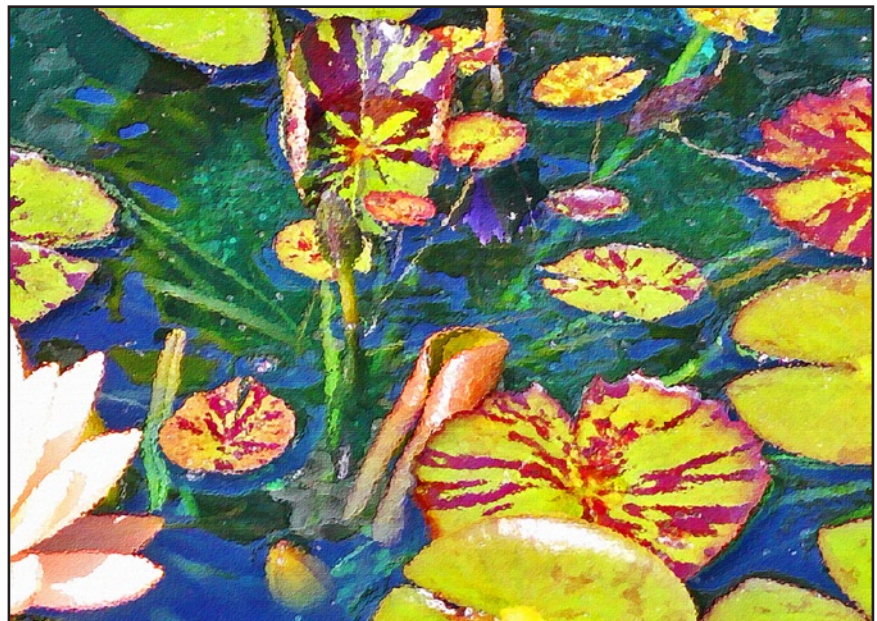


15. With the Filters Copy layer selected, go to Filter>Stylize>Emboss.
16. Choose the following settings: Angle 135, Height 1, Amount 500%. Click OK.
17. Lower the Opacity of the Filters Copy layer to 40%.



18. **IF YOU ARE A PHOTOSHOP USER, YOU SHOULD NOW CLICK THE LITTLE SQUARE AT THE BOTTOM LEFT OF THE ACTIONS BOX TO STOP THE RECORDING OF YOUR ACTION.**

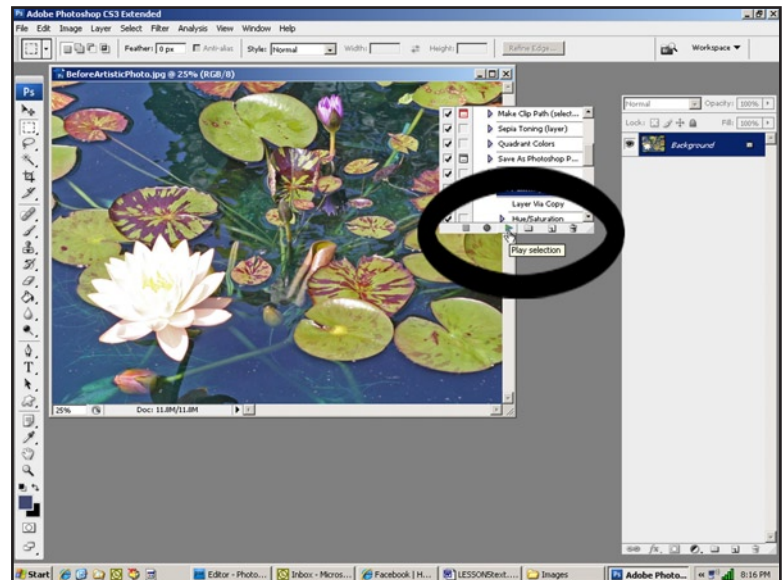
19. Your oil painting is finished! As I said, it often doesn't look much like an oil painting on the screen. Press CTRL and + (CMD and +) a few times to get an up close look at the painting and I think you'll say "Ooooh!"



20. Right-click in the Layers Palette, choose Flatten Image. Save the file with a new name. Close this photo file.

A note to Photoshop Users

Now that you have recorded your Oil Painting Action, you can create an Oil Painting in seconds! All you have to do is open your photo in Photoshop, open the Actions Palette, select the Oil Painting Action and click the "Play" button, the little forward arrow at the bottom of the Actions Palette. You can watch the Action run through the steps and you'll automatically have an Oil Painting! Pretty cool!



IN CONCLUSION

You've learned some of the ways to use Photoshop to put an artistic spin on your photos. Some of these techniques are simple and some have more steps. I hope that you are becoming familiar with more of the Filters and Blend Modes and how they can be combined. I also hope that these lessons are giving you ideas for ways to develop your own artistic looks in your photos. Again, please be sure to ask questions or add comments in our Forums. I'd also love to see your artistic photos in our Gallery.

NEXT UP

Lesson Six-A Mixture of Mini Effects