

LESSON #4: These Photos Are Sketchy!

- Creating a Pencil Sketch from your photo
- Using the Artistic Cutout Filter
- Using the Colored Pencil Filter
- Making a Coloring Book Page

It's time to put on your artist smock and beret because we're going to create some wonderful artistic masterpieces in the next two lessons! The techniques you will learn in Lessons Four and Five are great to use on all photos, but especially useful on less-than-perfect photos that you would like to find a way to save. Remember those frames we added in Lesson One? They would look great around the masterpieces you are going to create!

This is the photo I'll be using for all my sketching techniques. I really liked the photo but the sun filtering through the hat is creating distracting shadows on his face. I thought a sketch would preserve the smile but cause the shadows to be less distracting.



CREATING A PENCIL SKETCH FROM YOUR PHOTO

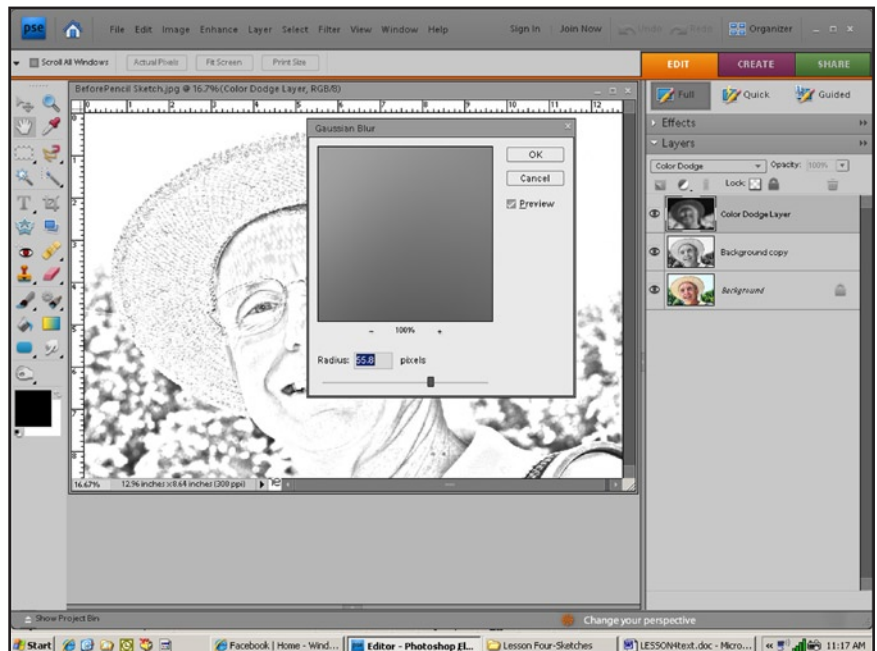
1. Open a photo, duplicate it and do whatever correction you wish: resizing, color, exposure, sharpening, etc.
2. In the Layers Palette, right-click on the Background Layer and choose Duplicate Layer. Click OK.
3. Change the duplicate layer to black and white the same way we did in Lesson Three. In Photoshop Elements 6 and 7, in the top menu bar, go to Enhance>Adjust Color>Remove Color. In Photoshop and older versions of Photoshop Elements, in the top menu bar, go to Image>Adjustment>Desaturate.
4. Right-click on the Background Copy Layer and choose Duplicate Layer. Click OK.
5. To avoid confusion, we're going to rename the new layer we just made. Right now it is called "Background Copy 2". Point your cursor to the Layer name and double click. This should highlight the name of the layer. Type in "Color Dodge Layer." Click away from the words and they will be confirmed.



6. With the Color Dodge Layer selected, press CTRL+I (CMD+I) to invert the layer. Now it will look like a negative!
7. With the Color Dodge Layer still selected, click open the Blend Mode box above the Layers Palette and choose (surprise!) Color Dodge. You will now see mostly or all white.
8. Next we're going to apply a Blur to the layer to make the photo appear. We'll try the Gaussian

Blur first. Go to Filter>Blur>Gaussian Blur and the Gaussian Blur window will appear and so will your sketch!

9. Depending on your photo, you will want to change the Pixel Radius at the bottom of the box to show more or less of your photo. Slide the slider around and watch your sketch until you get a look you like. The greater the Blur, the wider and darker the lines and shadows will become. (Mine is set at 39.1) Then click OK.



10. If you feel like experimenting, the Motion Blur, Radial Blur, and Blur More filters provide some interesting results too. Try them sometime!
11. Now you have a black and white pencil sketch! If you want to keep your black and white sketch, skip over this step and go to step 12. If you want to make it a colored sketch, select the Background Copy layer. Click on the Opacity box above

the Layers Palette and slowly slide the slider to the left until you get the look you like. Mine is set at 44.

12. Right-click in the Layers Palette, choose Flatten Image. Save the file with a new name. Close this photo file.



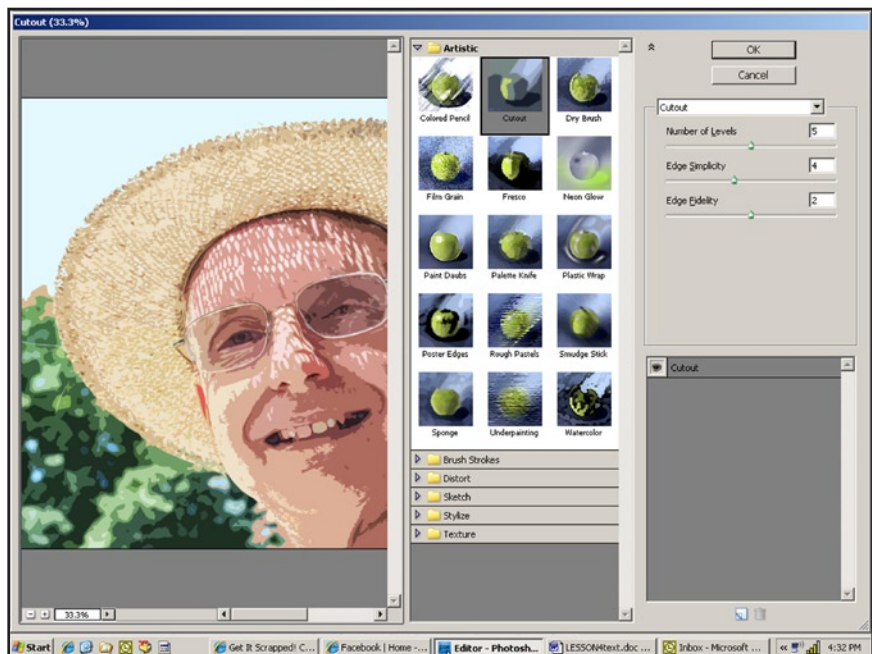
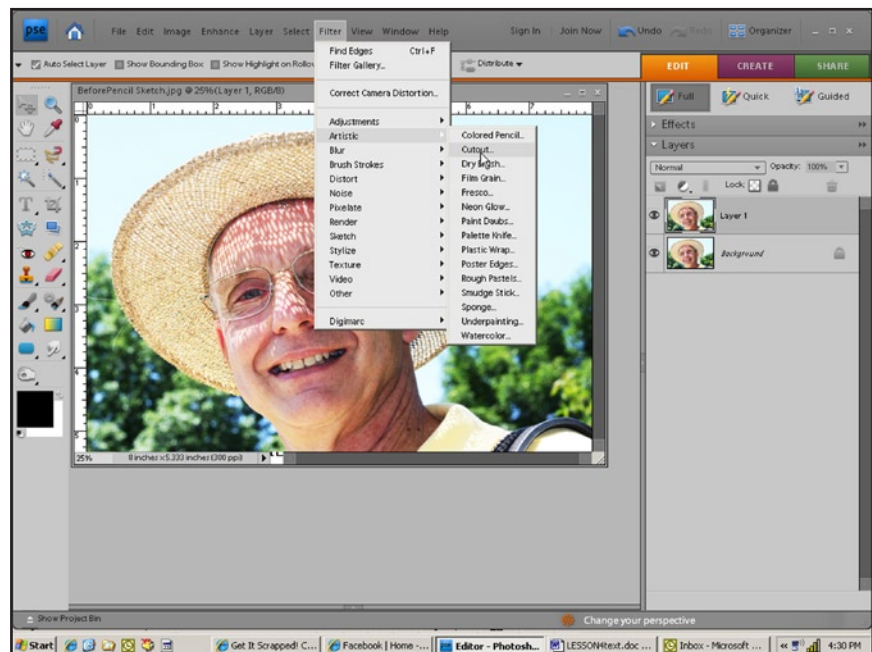
USING THE ARTISTIC CUTOUT FILTER

Good old Photoshop! Of course, there are many ways to make your photo into a sketch! Each technique produces a slightly different effect. I think we should try one more technique before we move on. This one is very easy.

1. Open a photo, duplicate it and do whatever correction you wish: resizing, color, exposure, sharpening, etc.



2. Right-click on the Background Layer and choose Duplicate Layer. Click OK.
3. In the top menu, with the Background Copy Layer selected, go to Filters>Artistic>Cutout.
4. This will bring up the Cutout Filter Option Box.
5. At this point, your photo is squished into a little window on the left and it may be hard to see. Press CTRL+minus (CMD+minus) a few times, until you can see a good bit of your photo in the left window.
6. We're going to adjust the settings in the upper right of the box, being careful to keep the detail without distorting the color or shapes too much. You may want to experiment with these settings to get the look you like. I chose these: Number of Levels 5, Edge Simplicity 4, Edge Fidelity 2. Click OK.



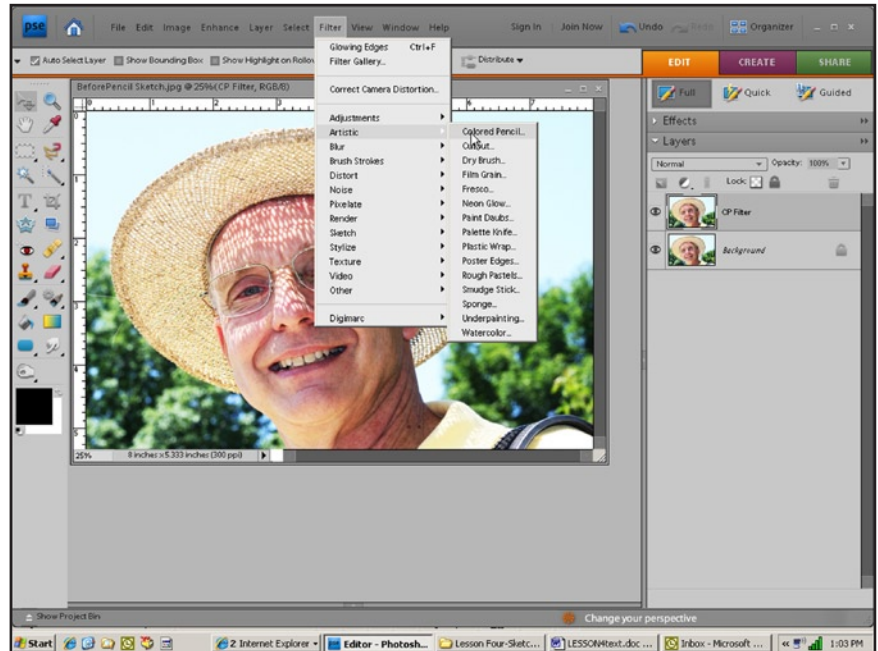
7. Create another copy of the Background Layer and drag it above the other layers in the Layers Palette. With this layer selected, in the top menu, go to Filter>Stylize>Find Edges. This will immediately change your photo.
8. With the top layer (Background Copy 2) still selected, go to the Blend Mode box above the Layers Palette. Change the Blend Mode of the Background Copy 2 layer to Overlay.
9. Right-click in the Layers Palette, choose Flatten Image. Save the file with a new name. Close this photo file.

USING THE COLORED PENCIL FILTER

Now we're going to use the Colored Pencil Filter to make a pencil sketch. In this technique, you'll be using new Filters and learning new shortcuts.

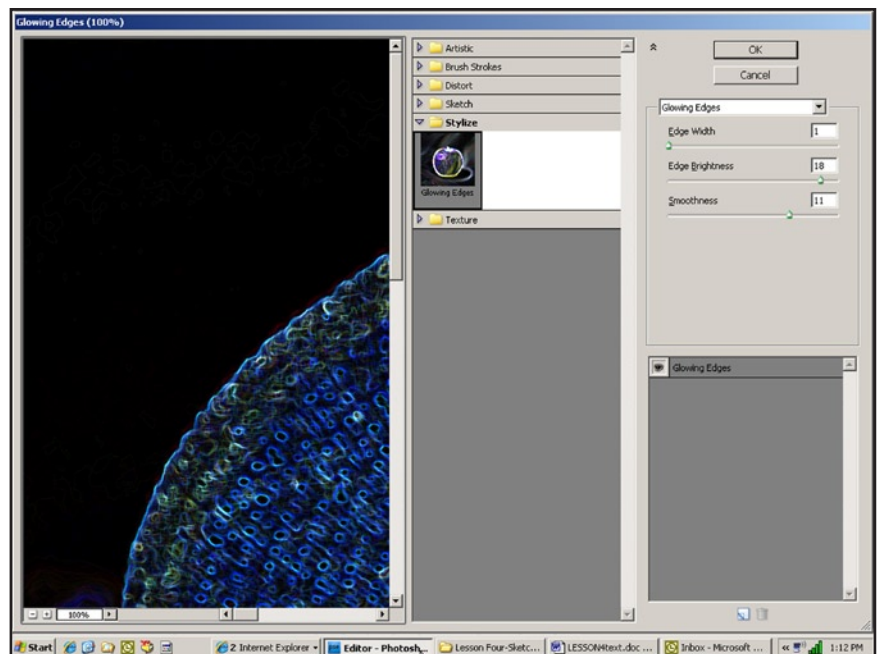
1. Open a photo, duplicate it and do whatever correction you wish: resizing, color, exposure, sharpening, etc.
2. Now we're going to duplicate the layer. You could right-click on your Background Layer and choose Duplicate Layer as we have done before or you can also use the **shortcut** and press CTRL+J (CMD+J). Gotta love those shortcuts!
3. Double click on the name of this new layer and rename it "CP Filter".
4. With the CP Filter layer selected, in the top menu bar, go to Filter>Artistic>Colored Pencil.

- When you click on Colored Pencil, you will get the Colored Pencil Filter Option Screen. In the upper right, select the following settings, Pencil Width 6, Stroke Pressure 12, Paper Brightness 50. Click OK. When you play with this Filter later on, you can experiment with these settings to see the different effects.



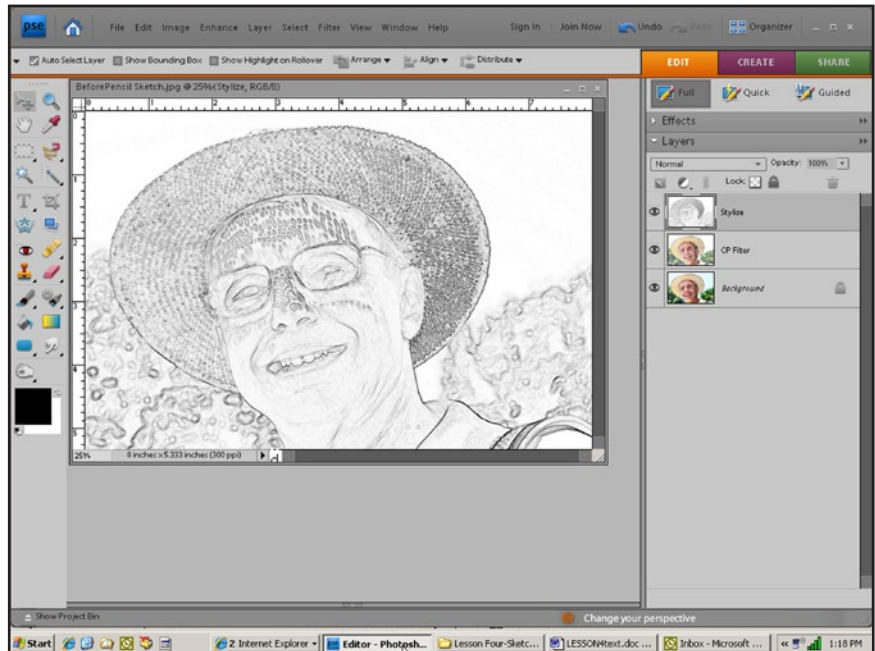
- In the Layers Palette, select the Background Layer and press CTRL+J (CMD+J) to create a duplicate of the Background Layer. Rename this new layer "Stylize" and, holding down the mouse button, drag the Stylize layer to the top of the Layers Palette.

- With the Stylize layer selected, go to Filter>Stylize>Glowing Edges. This will bring up the Stylize Options Screen.



- In the upper right, select the following settings, Edge Width 1, Edge Brightness 18, Smoothness 11. Click OK. Again, you may want to play with these settings at a later time.

- With the Stylize Layer selected, press CTRL+I (CMD+I) to Invert the selection. Then (here comes a new **shortcut!**) press CTRL+Shift+U (CMD+Shift+U) to Desaturate, or remove the color, from this layer. Your photo should look something like this:



- With the Stylize Layer selected, go to the Blend Modes box above the Layers Palette and select Soft Light. Your photo should now look something like this:

- Right-click in the Layers Palette, choose Flatten Image. Save the file with a new name. Close this photo file.



12. I have guided you through this technique using the settings that I have used most successfully. This is a matter of taste and also depends somewhat on the photo that you are using. Play around with the settings on these Filters and see what other effects you can achieve!

MAKING A COLORING BOOK PAGE

This technique works best on a photo that has some high contrast and doesn't have too much detail. A clear close up of a face works well. I have provided a photo for you to work on, if you are having trouble quickly finding one to use for the lesson. It is called BeforeColoringBook and can be downloaded in the Forums where you found the Lesson download.

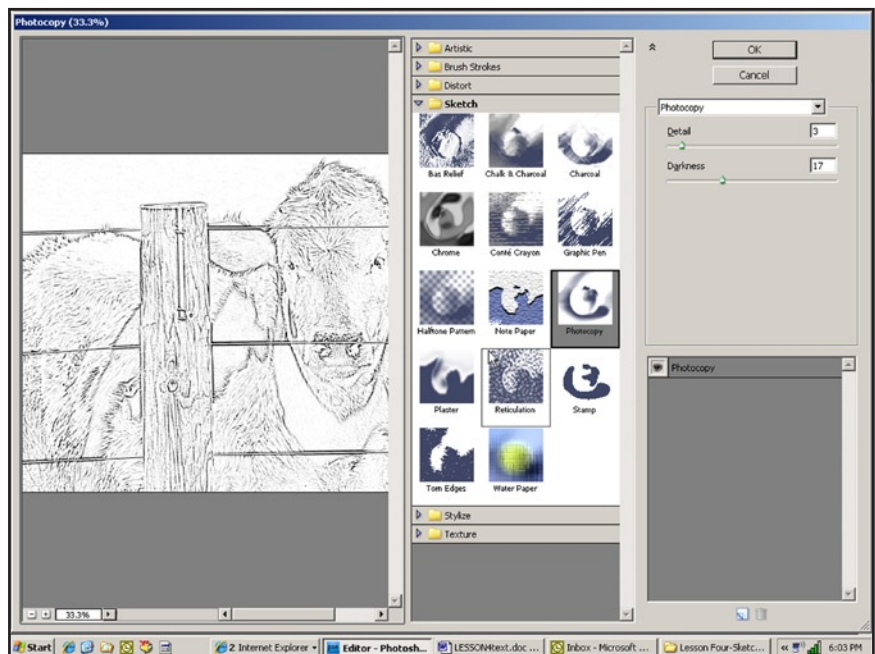
1. Open a photo, duplicate it and do whatever correction you wish: resizing, color, exposure, sharpening, etc. If you are going to make a coloring book, you will want to resize all of your images to the same size, perhaps 8 by 10, so they will fill the page when you print them on 8.5 by 11 paper.



2. In the Layers Palette, duplicate the photo. Remember CTRL+J (CMD+J)?
3. Make sure the Foreground (at the bottom of tool bar at the left of the work area) is set to Black. With Layer 1 (the Background Copy layer) selected, in

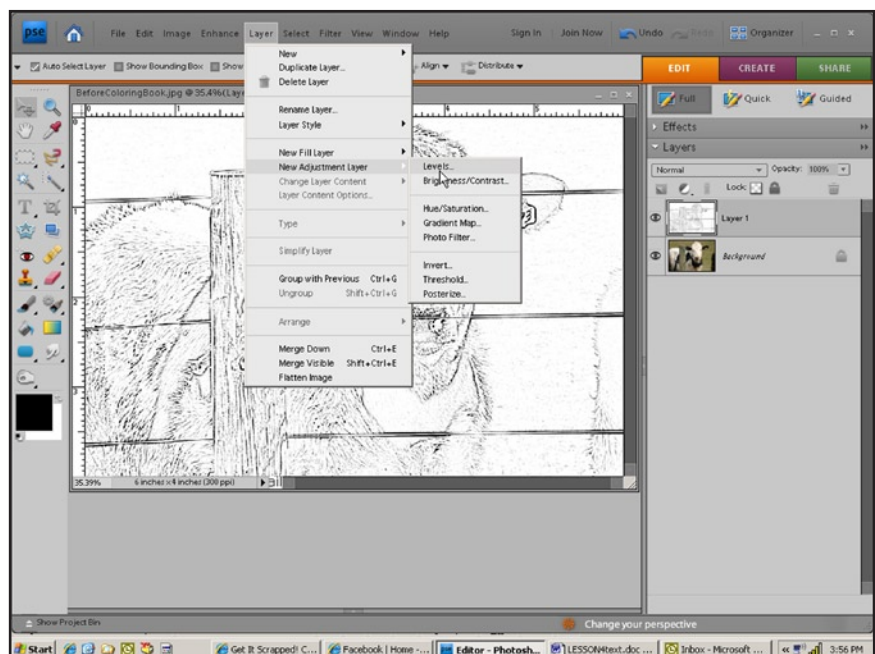
the top menu, go to Filter>Sketch>Photocopy. Click CTRL+minus (CMD+minus) a few times to see a good bit of your photo in the box.

- Now we're going to set the Detail and Darkness settings in the upper right hand corner. We're going to try to keep the Detail setting as low as possible while still maintaining the major outlines of the image.



The Darkness setting needs to be dark enough to see the outlines we want to keep. In this instance, I have the Detail set at 3 and the Darkness at 17. You will probably have to play with these settings a bit for other photos. Click OK.

- Now we're going to do a little bit of cleaning up to make the image as crisp and clear as possible. In the top menu, go to Layer>New Adjustment Layer>Levels.



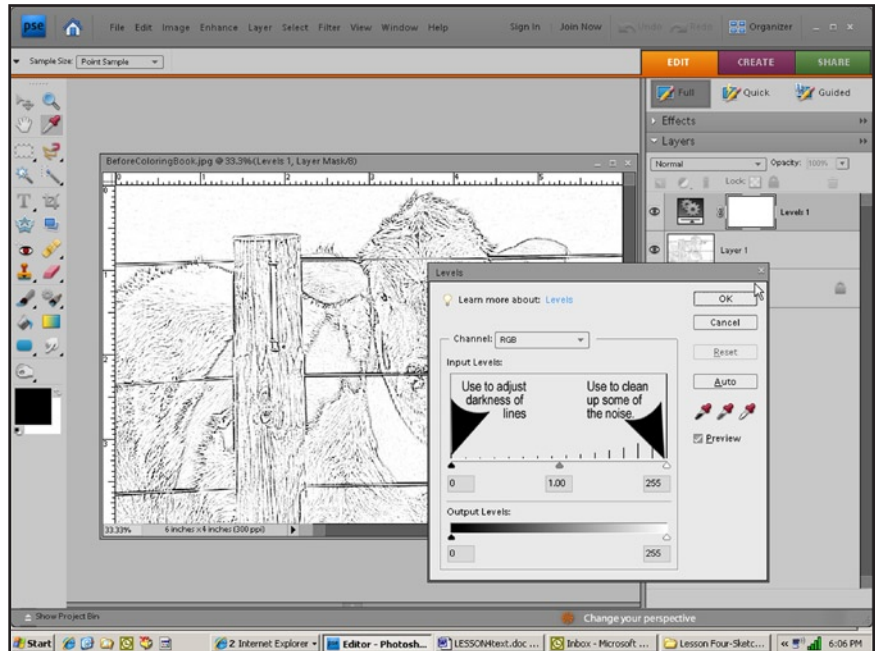
6. This will bring up the New Layer box that we have seen before. Click OK. Then you will see the Levels Adjustment Layer Option Box.

7. Under the Input Levels box, you will see three little slider arrows. The one on the left is black, it adjusts the shadows. Slide it to the right until you are satisfied with the darkness of the lines.

Mine is set at 20. **DO NOT** click OK yet, until you have set the other sliders.

8. The little slider on the right is white and it adjusts the highlights. Move it to the left to clean up some of the "noisy" areas of the image. Mine is set at 239. We won't do anything with the middle slider which handles the midtones, because we aren't concerned with them in this technique.

NOW click OK! Does your photo look sort of like this:



9. Right-click in the Layers Palette, choose Flatten Image. Save the file with a new name. Close this photo file.

IN CONCLUSION

You've learned some of the ways Photoshop allows you to create a sketch from your photo. You can have some great fun and create interesting photos if you experiment a little with the settings in these techniques. Again, please be sure to ask questions or add comments in our Forums. I'd also love to see your sketches in our Gallery.

NEXT UP

Lesson Five-Applying Artistic Effects